

# CONTROL

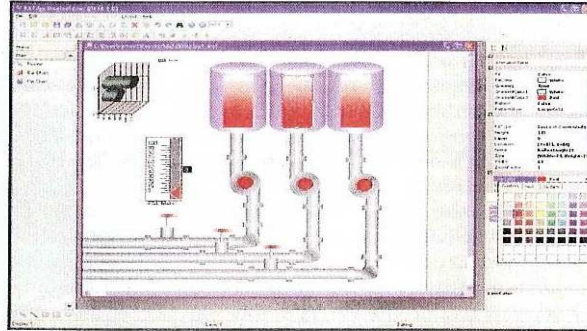
FOR THE PROCESS INDUSTRIES

## Drag/Drop and .NET Underpin Development Suite

There are many interesting vendors we don't often hear about. After seeing the results of their work for years, CONTROL was introduced to Kinesix Software recently, due to the introduction of their new software, KX Edge. Who is Kinesix? Well, they do the operator interface for the space shuttle, for other NASA projects, and are built into HMI products from Siemens, ABB, Invensys, and others. The product they've made for years is called SAMMI, and is a key engine for the display of real-time data graphically in the control room and throughout the enterprise. The KX Edge Development Suite is the newest addition to Kinesix' product line, and is a radical departure, since it is a .NET architecture environment.

This enables Kinesix to provide a client-server architecture that will enable many more applications for their SAMMI product and permit the integration of third-party applications.

The product consists of a Display Builder component, using pre-built "drag and drop" objects; a Runtime environment permitting up to thousands of displays to be used with low memory overhead; and API applications and data servers through the runtime environment which receive



data and control logic from back end applications. The underlying protocol for connection to a data source can be PRCs, .NET remoting, XML SOAP, or even user specific, while additional adapters can be added for custom or third party communications.

Kinesix plans an early release now, with general availability in first quarter 2006. For more information, contact Kinesix Software, [www.kinesix.com](http://www.kinesix.com) or 713-953-8344.

## SPACE NEWS

INTERNATIONAL

### Kinesix Offers Upgraded Control-Room Product

A Houston-based company is set to release an updated version of its space-vehicle control room software that it says offers improvements in complex graphics displays and other areas.

Kinesix Software, whose customers include NASA and several major aerospace companies, will begin offering an initial version of its KX Edge product by the fourth quarter of 2005, Russ Jamerson, the company's chief executive officer, said in an interview. The final product will go on the market in the first quarter of 2006, he said.

The new product does a better job of displaying data across multiple workstations outside the control room than previous versions, Jamerson said. The software will let workers see high volumes of real-time data on graphics displays, he said. The software, which contains over 1 million lines of code, is compatible with both Microsoft and Linux operating systems, Jamerson said. "In the past, this was not an easy thing to do because the proprietary systems had no way of talking to each other," Jamerson said, adding that aerospace industry clients have stressed to him the need to move beyond Unix-based systems.

KX Edge was developed over a three to four-year time period by a 10-person team, and is the result of over \$1 million in investment by the company, Jamerson said.

## Pipeline and Gas Journal

### Application for Pipeline Control

Kinesix Software says it is developing a major graphics application for pipeline control. Kinesix's new product, which is in alpha testing under the name KX Edge, will allow users to display complex information across dozens, or even hundreds, of workstations.

This means workers will be able to utilize increasingly elaborate dashboards to view large volumes of streaming data instead of relying on rudimentary numeric readings or basic, conventional GUIs.

The company is building KX Edge on top of the .Net development platform, the emerging Microsoft protocol. Kinesix believes that its movement toward .Net is indicative of where the entire command-and-control software market is headed.